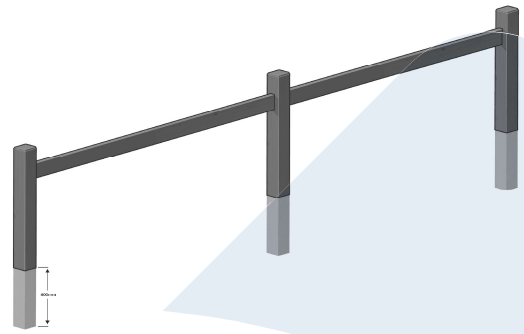


1 Rail Fencing System



Standar: 2 Bays, 1 Rail Fence
600mm High

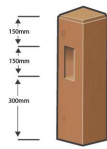


Optional: 2 Bays, 1 Rail Fence
1200mm High

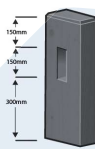
Post/Rail Options



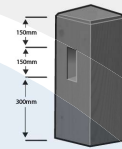
Standard Rail
150x50



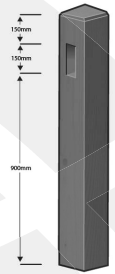
Standard Post
150x150, 600 High



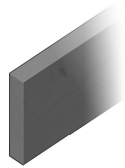
Optional
200x100, 600 High



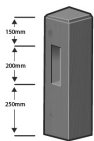
Optional
200x200, 600 High



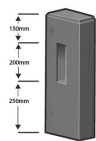
Optional
150x150, 1200 High



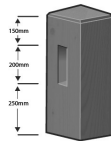
Optional Rail
200x50



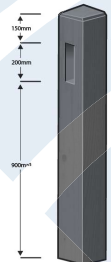
Optional
150x150
600 High



Optional
200x100
600 High

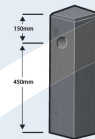


Optional
200x200
600 High

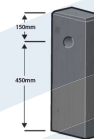


Optional
150x150
1200 High

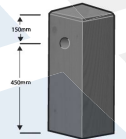
Steel Tube/Chain Options



Optional
150x150
600 High



Optional
200x100
600 High

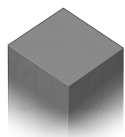


Optional
200x200
600 High

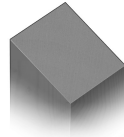
Post Top Options



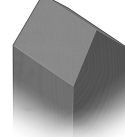
Chamfer
(Standard)



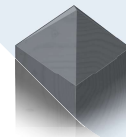
Plain



Bevel



Pitched



Pyramid



www.strukta.com.au

☎ 0427 987 332 (Isaac Mead)