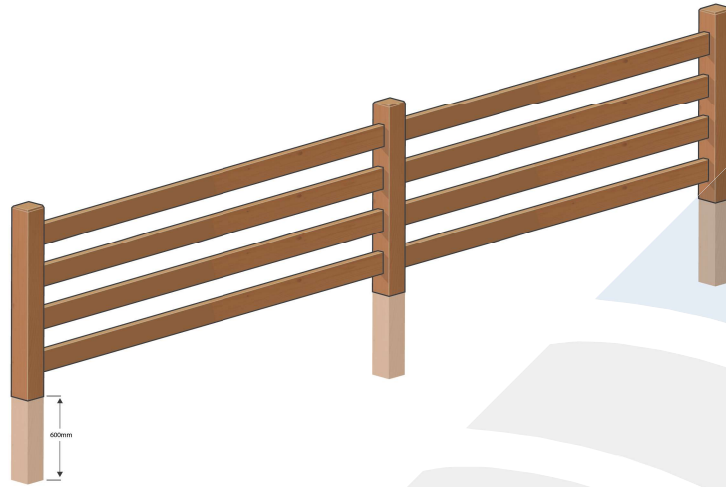


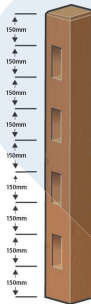
# 4 Rail Fencing System



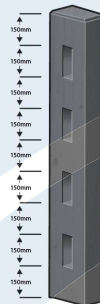
## Post/Rail Options



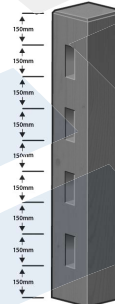
Standard Rail  
150x50



Standard Post  
150x150  
1350 High



Optional Post  
200x100  
1350 High

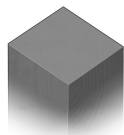


Optional Post  
200x200  
1350 High

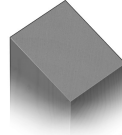
## Post Top Options



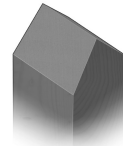
Chamfer  
(Standard)



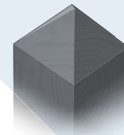
Plain



Bevel



Pitched



Pyramid



[www.strukta.com.au](http://www.strukta.com.au)

☎ 0427 987 332 (Isaac Mead)